



Provide **Pre-owned Semiconductor Equipment Solutions**, Including used tools, parts, and labors, to the Global Value Chain with 1,000+ pre-owned equipment, cleanroom facilities, and global network.

SurplusGLOBAL

Semiconductor Equipment Cluster

Company Overview

Founded • March 28,2000

CEO • Bruce Kim

Network

- Headquarters
 - SurplusGLOBAL Korea (Yongin City)
- Global Operations
 - San Jose, Shanghai, Tokyo, Hsinchu, Singapore

Business Areas

- Pre-owned Semiconductor Equipment Business
 - Purchase and sale / Rental & Technical Support / FAB Consulting & Valuation Service
- Parts Platform Business (with EQ GLOBAL)
- Semiconductor Equipment Cluster

Others

- Global No.1 Pre-owned Equipment Solution Provider
- Listed on KOSDAQ
- Selected as 'Forbes Asia's 200 Best Under A Billion 2022'.



Vision & Mission

Vision 1 Billion Company Value, 100 Year Company

Mission We contribute to the semiconductor ecosystem by providing the secondary equipment and optimized solutions for customers

Values we believe in and dream of

In the semiconductor equipment market, with sophisticated supply chain systems worth over USD 100 billion, SurplusGLOBAL contributes to the world by creating a virtuous cycle of used equipment and parts.



About Us

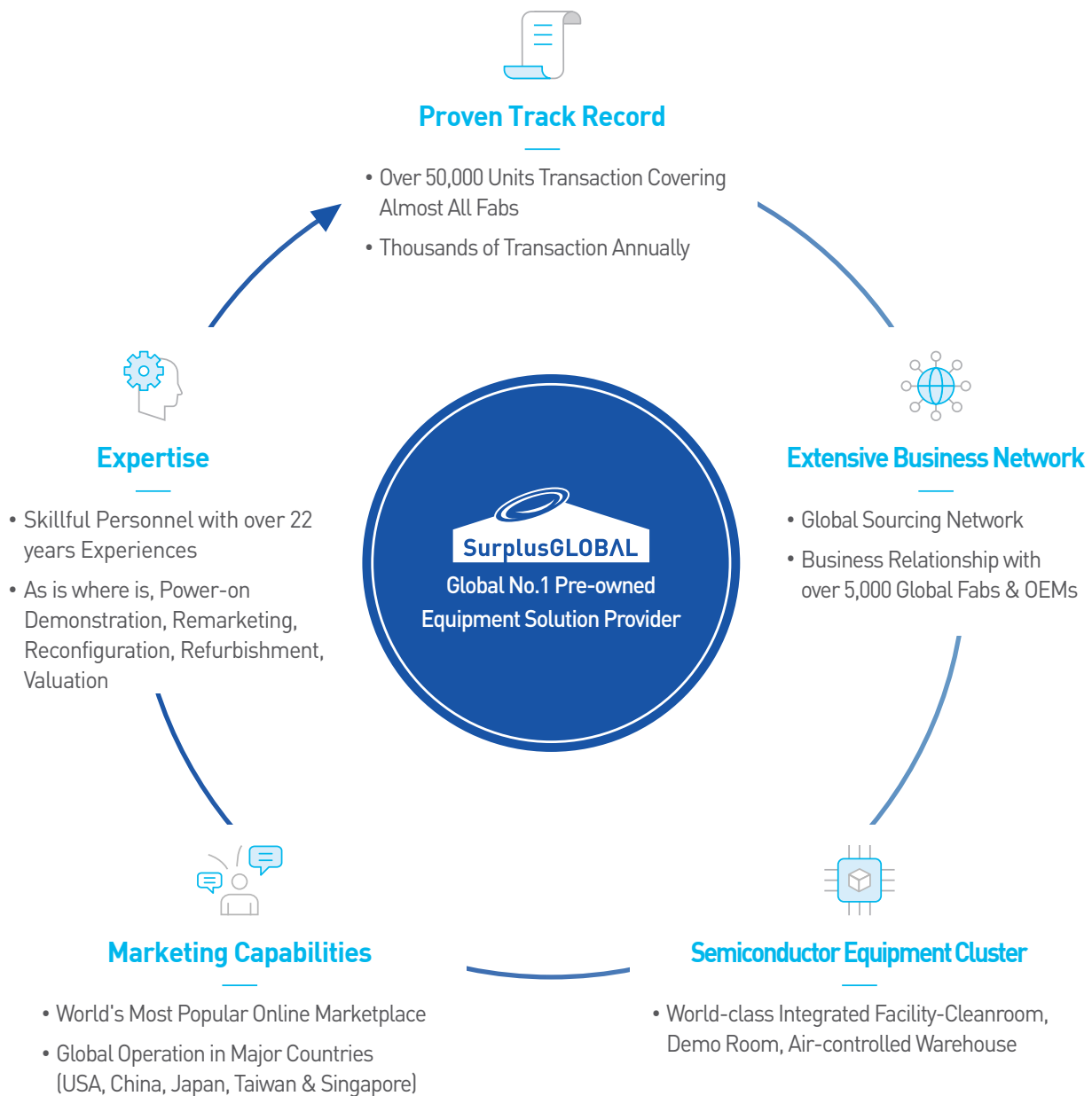


“

*Over the past 22 years,
we have traded over **50,000 used
semiconductor equipment** to **5,000
customers from 50 countries.***

”

Our Competitiveness



Main Items Global No.1 Pre-owned Semiconductor Equipment Solution Provider

Front-end



PHOTO

- Stepper
- Scanner
- Aligner



Photo@SurplusGLOBAL.com



TRACK

- Track
- Scrubber



Track@SurplusGLOBAL.com



THIN FILM

- CVD
- PVD
- EPI



ThinFilm@SurplusGLOBAL.com



ETCH

- Etcher
- Asher



Etch@SurplusGLOBAL.com



DIFFUSION

- RTP
- Furnace
- Implanter



Diffusion@SurplusGLOBAL.com



CMP



Diffusion@SurplusGLOBAL.com



WET



WET@SurplusGLOBAL.com



METROLOGY

- CD-SEM
- Surfscan
- Overlay
- Wafer Inspection



Metrology@SurplusGLOBAL.com

Back-end



ATE

- Memory Tester
- LCD Driver Tester
- SOC Tester / Logic Tester
- Handler / Prober
- Laser Repair System



ATE@SurplusGLOBAL.com



PACKAGING

- Wire Bonder
- Die Bonder
- Dicing Saw
- Back Grinder
- Flip Chip Bonder



Package@SurplusGLOBAL.com



SMT

- Chip Mounter
- SPI
- AOI
- ETC



SMT@SurplusGLOBAL.com



MOCVD



Package@SurplusGLOBAL.com

Parts



- CMP, Head Rotation Motor
- Pump
- Booster
- Chiller
- Controller



Parts@SurplusGLOBAL.com



- Generator
- ARM
- Matcher
- RPS
- Robot
- Driver
- Controller
- Pre-Aligner



eqsales@eq-global.net

Repair



- ADVANTEST
- NEXTEST
- Yokogawa
- RPS for Asher Process
- RPS for Chamber Cleaner
- Matcher Products



eqsales@eq-global.net

Products



- GENERATOR EQG-1.5K
- GENERATOR EQG-3K
- GENERATOR EQG-3K-2M
- GENERATOR EQG-5K
- GENERATOR EQG-10K
- RF MATCH EQM-1000LC
- RF MATCH EQM-5000AU



eqsales@eq-global.net

Global Parts Platform

Online Marketplace: www.SurplusGLOBAL.com

01 Trading

1-1) Global Sourcing :

- Semiconductor Key Part Sourcing, Harvesting and Sales

1-2) Sales :

- Pre-Owned Semiconductor Equipment Sales Global Platform

02 Repair

· Semiconductor Parts Repair and Replacement

2-1) RF Repair:

- EQ GLOBAL provides RF Generator, RF Match, RPS, Microwave, Power Supply, PCB, RF Cable, RF Sensor REPAIR Services for 200mm fabs and LCD lines. Continuously developing REPAIR technology for 300mm Semiconductor and OLED equipment
- Operates overseas REPAIR shops to serve global customers
- Follows EQMS (EQ GLOBAL Quality Management System) to provide high quality service. EQ GLOBAL is ISO certified

2-2) RF Replacement:

- EQ GLOBAL develops and manufactures obsolete parts for legacy equipment
- Operates in-house made high level test system for quality assurance

2-3) TESTER REPAIR :

- EQ GLOBAL develops latest model ATE (Automatic Test Equipment) REPAIR technology
- Customer level final test for quality assurance

03 Qualification

- Parts qualification using pre-owned equipment infrastructure



Business relationships with over 5,000 Global Fabs & OEMs



Experienced professional engineer



More than a thousand used equipment



The highest level of facilities

Contact Us

Trading / Replacement / QA : Parts@SurplusGLOBAL.com

Repair : RFsales@eq-global.net

EQ GLOBAL : 031-321-2995 / SurplusGLOBAL : 031-728-1400




Semiconductor Equipment Cluster


+Together with several global top-tier equipment manufacturers





Office & Exhibition Hall



Clean room 4,192m²
Additional expandable to 4,192m²



Air-Controlled Warehouse
59,504m²



Demo room 1,652m²

1 Air-Controlled Warehouse	59,504m ²
2 Clean room	<p>4,192m²</p> <ul style="list-style-type: none"> • 1100,000Class = 1,193m² • 1,000Class = 1,273m² • Additional expandable to 4,192m² • 1,000Class = 635m² • 100Class = 1,091m²
3 Demo room	1,617m ²
4 Office & Exhibition Hall	<p>5,502m²</p> <p>Coworking space available (small-large size office), 30 Exhibition booth with 1,000 annual visitor</p>

Infrastructure



Utility

- PCW, CDA, DI, N2, Vacuum
- Gas Supply System
- Clean Room (1,000 ~ 100,000 Class)



Electricity

- Stable Supply of Electricity (9,900kW capacity)
- UPS (1,000KVA - 15Min)
- Own Emergency Generator (1,500kW/990L(3h))



Floor

- Floor Load (2ton/m2)
- Flatness FM4 / Strength AR2



Amenities

- Cafe, CVS, Fitness Center, Library, Rooftop Garden, Game Room, Laundry, Cafeteria, and Exhibition Hall
- Cleaning Services
- Cesco Services (Scent & Insect Control)



Cluster 2030 Project (The total size of 330,578 SQM)



- ✓ Total investment cost : \$600 million (building + equipment)
- ✓ Total cluster's assets : over \$1.5 billion

o Aerial view



o Semiconductor Ecosystem

- Move-in : Global Demo Center + Refurbishment Center + Training Center of global manufacturing companies
- Semiconductor complex campus attracting semiconductor key talented man
- New campus (potential regions: Pangyo, Pyeongtaek-Oseong industrial complex)

- Floor space : 231,400m²
- Clean room : 33,057m²

CSR (Corporate Social Responsibility)

Donation of Semiconductor Equipment

By donating semiconductor equipment, we contribute to cultivating talented individuals with semiconductor expertise. We continuously support good education programs that balance theory and practice through donated semiconductor equipment.

Semiconductor Education Business Support

SurplusGLOBAL contributes to the semiconductor eco-system by providing on-site visits for education purposes with minimal investment by utilizing over 1,000 semiconductor equipment in stock. We aim to establish an equipment education environment that encompasses all semiconductor processes (6", 8", 12"), and in the mid to long term, we aim to provide hands-on education to more than 2,000 individuals.



We have established the Smiletogether Foundation to build an inclusive society where individuals with developmental disorders and nondisabled people can live in harmony, by returning what we have earned to the society.



The Autism Expo is an exhibition for people who live with autism and is held first in Asia and is the largest exhibition in the world. To present challenges facing each life cycle and a roadmap for future design by providing various information, counseling, products, and services necessary for autistic disorders and developmental delays in one place.



TokTok is a workplace for the disabled. It was jointly established by Surplus GLOBAL and other companies in the semiconductor equipment cluster.

